



New Releases

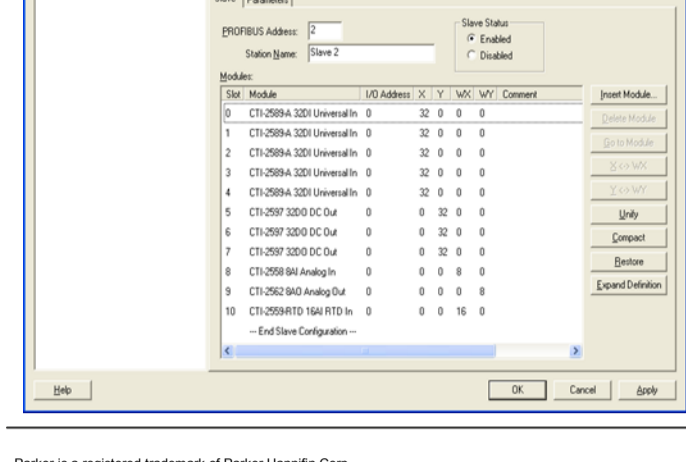
PLC Workshop™ 505 V4.31 and 505 Simulator™ V2.05

PLC Workshop™

A new version of PLC Workshop™ 505 has been released.

New Key Features

- Profibus Configurator supports all available controller types, replacing Siemens™ Com Profibus
- Profibus Configurator supports GSD files that define more than one parameter length for a specified module
- Supports complete configuration of Profibus-DP networks and devices.
- The program file format has been updated to store Profibus configuration data.
- Long address types (V, K, and T) are now supported in ladder logic.
- The PRINT Special Function instruction is now fully supported for the CTI 2500 Series controllers.
- The CFUNC (Custom Function) instruction is now supported for the CTI 2500 Series controllers.
- The CTI 2500 Programming Reference Manual is now distributed with the software



Parker is a registered trademark of Parker Hannifin Corp. Siemens and SIMATIC is a registered trademark of Siemens AG. 5TI, Series 505, PM550 and TISOPT are trademarks of Siemens Energy & Automation Inc. T1605, T1625, T1635, T1665 and T1645 are trademarks of Texas Instruments Incorporated. Belden is a registered trademark of Belden Inc. CTI and CTI 2500 Series is a registered trademark of Control Technology Inc. Fastrak, and PLC Workshop is a registered trademark of Fastrak SoftWorks, Inc. To unsubscribe from receiving CT News via email please send an email to sales@ap-cti.com with unsubscribe in the subject line. Copyright 2008 CT Oceania, all rights reserved. All trademarks and registered names are the property of their respective owners. While every effort has been made to ensure the accuracy of the content, CT Oceania takes no responsibility for inaccuracies or errors and will not be held accountable for any misuse of the information provided. This newsletter is from CT Oceania ABN 22 002 533 959

505 Simulator™

The new version of 505 Simulator™ recently released seamlessly integrates with PLC Workshop™ for Siemens 505 providing an easy platform for developers to test and debug their systems without the use of SIMATIC® 505 or CTI 2500™ hardware. The users can step through the program network by network or instruction by instruction to fine tune any regression testing in a fraction of the time it takes with setting up a hardware test rig, plus have the confidence the project will work every single time.

505 Simulator™ is designed to simulate logic from any Siemens SIMATIC®/ TI PLC with preset configuration for all 545, 555 and CTI 2500 Series™ PLCs. The package offers real and simulated timing modes allowing users to configure any parameters as required easily and quickly. It supports its own file format, providing the simulated state and settings (i.e. PLC type, timing modes, I/O recipes, breakpoints) to be saved, which is an advantage when testing large projects. 505 Simulator™ can be used in conjunction with FTrender and FTLogger for logging real time data and visual graphic display of expected trends.

Maintenance for 505 Simulator™ includes unlimited technical telephone support and product upgrades are automatically included at no additional cost to the customer as a part of your Workshop annual renewal. For further information, please contact CT Oceania.

Articles In this issue

1. PLC Workshop™ 505 Version 4.31 - New Release
2. 505 Simulator™ V2.05 - New Release
3. New Product – GridConnect Ethernet/RS232 Adaptor

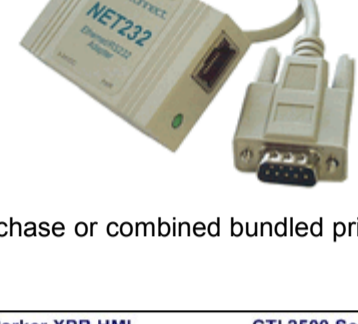


GridConnect Device

Need more serial ports for a CTI 2500 Series™ Processor? Now it is possible using the GridConnect™ NET232 Ethernet/RS232 Adaptor. For customer requiring installation of HMI panels or other serial devices, more ports can be added using a GridConnect™ NET232 Adaptor. The adaptor uses built-in Ethernet capabilities of the CTI processor to expand serial ports, also allowing serial ports to be located remotely. This also allows users to connect remote devices on a network such as the CTI 2500 CPUs and Ethernet modules (2572 and 2572-A). Note the NET232 adaptor must be on the same network as the CTI 2500 Ethernet modules.

Example

CTI 2572-A	199.184.177.230
PC	199.184.177.201
NET232 Ethernet/RS 232 Adaptor	199.184.177.201



The package includes the following

- GridConnect NET232 Ethernet/RS232 Adaptor
- Power connection for 9-24VDC (via terminal plugs)
- DeviceInstaller CD

CT Oceania will hold stock and the product will be available for a single purchase or combined bundled price with a CTI 2572, CTI 2572-A, or any CTI 2500™ Series Processor.

